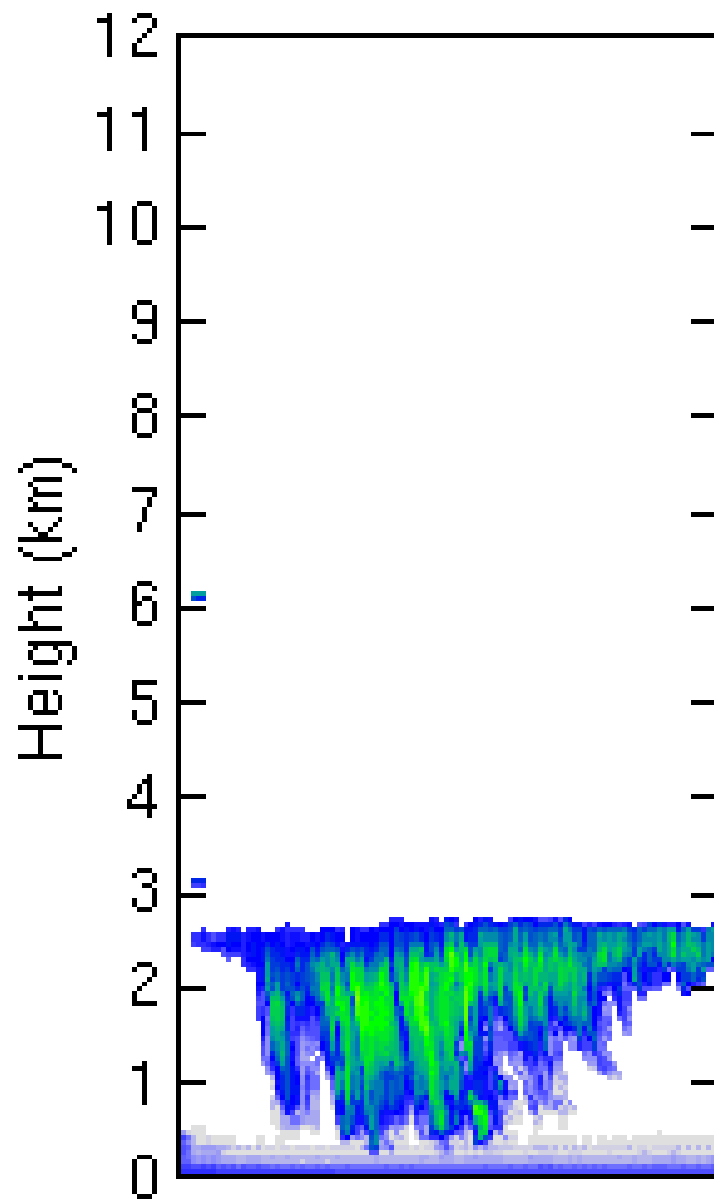


Stratocumulus cloud

- Stratocumulus is the most common type of cloud in Britain - if you look up at the sky you are more likely to see this sort of cloud than any other kind.
- Stratocumulus clouds form low down in the sky. Their base is usually below 2 km.
- The clouds are entirely made up of droplets of liquid water.
- The water droplets inside the clouds are very small, only 10-20 millionths of a metre across.
- Stratocumulus clouds give a low radar signal because the droplets of water inside them are small. The radar image therefore shows a small, weakly returned signal with low values of radar reflectivity factor i.e. the returned signal is shown in blue.



Stratocumulus cloud with drizzle

- Stratocumulus is the most common type of cloud in Britain - if you look up at the sky you are more likely to see this sort of cloud than any other kind.
- Stratocumulus clouds form low down in the sky. Their base is usually below 2 km.
- The clouds are entirely made up of droplets of liquid water.
- In stratocumulus clouds more than a hundred metres thick, larger drizzle drops grow to around 100-200 millionths of a metre across.
- These large droplets give a bigger radar return than the smaller droplets in normal stratocumulus clouds. The radar image therefore appears quite large and has blue and green areas.
- The drizzle drops fall, but usually evaporate before they reach the ground. The radar image therefore does not quite reach down to the ground.