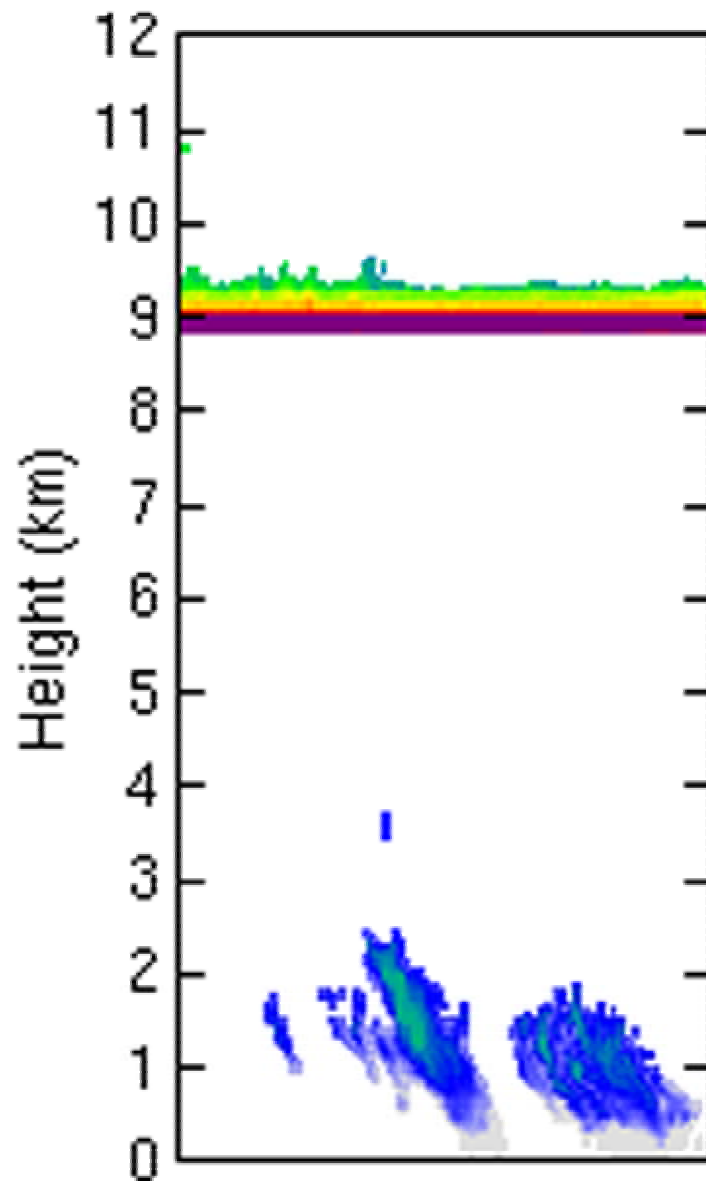


Insects

- On hot summer days, clouds of insects may hover 1-2 km above the ground.
- These insects are often carried up from the surface in plumes of hot air.
- In this example, insects have formed a layer at 800m above the ground.
- They return a weak radar image, which looks like a thin blue line.
- Insects pose more of a problem for cloud radar in the tropics than in the UK.



Faulty data

- This image is basically upside down, due to a fault with the radar.
- The pulse of electromagnetic waves transmitted by the radar up into the sky wrongly appears on the radar image, at a height of 9km. This is because the radar detector has got out of synch with the transmitter.
- This image therefore falsely seems to show a very straight line of cloud at 9km above the ground.
- Because the scan is upside down, the blue-green radar signals from some cirrus clouds appear at low levels near the ground instead of high up in the sky where they are really located.