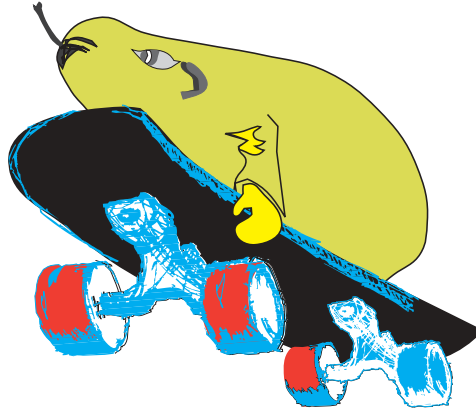


SPEED PAIRS



In this version of 'pairs', pupils do not have to recognise identical pairs, but put together the start and end of a statement or question. To avoid confusion the 'starts' are identified with a blue 'stripe' on the right edge, the 'ends' have a black stripe on the left edge.



Learning outcomes

This activity reinforces pupils' knowledge of aspects of **Sc4**, *Physical processes*.

Areas covered are electricity, forces and motion, and light and sound.

Managing the activity

Print the four card sheets and cut into individual cards. There are 31 card pairs in a pack. One pack is required for each group of pupils.

Two, three or four pupils may play the game.

Pupils shuffle the cards and spread them out face down. They each take it in turn to turn over two cards at a time. If the two cards make a complete, and accurate, sentence they keep that pair and have another turn. If the second card does not complete a sentence they turn both cards face down again and the next pupil takes a turn. When all the pairs have been claimed, the pupil with the most correct pairs is the winner.

More ideas

Pupils can make up their own sets of questions.